

# AWiCS

ASSOCIATION OF WOMEN IN  
CONSTRUCTION (SINGAPORE)

SKILLED | MOTIVATED | ARTICULATE | RESOURCEFUL | TRANSFORMED

## PRESIDENT'S MESSAGE



Stepping into the festive season, I would like to convey my very best wishes and sincere thanks to all of AWiCS supporters as we wrap up an eventful 2022.

Following the successful events held in the first half of the year, we constantly created platforms and opportunities to connect and inspire our members. With the sponsorship of Soilbuild Construction Group, we had a Networking Session & Happy Hour in September 2022. It was truly amazing to see our members enjoy the session and build new bonds.

Soilbuild also hosted AWiCS members to a very information tour of the Precast and Prefabrication Plant at their premises in Defu South, Singapore. It was also a great opportunity to understand the intricates of the process.

In addition to connecting with our members, AWiCS is also striving to encourage more woman to step up in the Built Environment. We had a lunch time talk at one of Kajima's site office and had an open discussion on the trends, challenges and opportunities of women in construction.

It is also delightful to see our partnership expanding with our latest MOU signed with PASMA.

Looking ahead, I hope that AWiCS will maintain the momentum and look forward to another successful and memorable year ahead.

I would like to thank everyone for being part of the AWiCS family. Merry Christmas, and Happy New Year!

Best Regards,

**Er. Emily Tan**  
**Founding President**

### Contents

Page 1

President's Message

Page 2

First Networking Session

Page 3

AWiCS Talk

Page 4

SoilBuild Plant Tour Visit

Page 5

MOU Signing with PASMA

Page 6 - 7

New Partners

Page 8

New Corporate Member





**AWiCS**

ASSOCIATION OF WOMEN IN  
CONSTRUCTION (SINGAPORE)

*Networking Session & Happy hour*

The Association of Women in Construction (Singapore) (AWiCS) held its first networking session & happy hour after the pandemic on 9 September 2022 at BrewHouse.

More than 30 professionals from various sectors of the Built Environment came together to mingle and network while enjoying sumptuous food and drinks. AWiCS would like to express gratitude to Soilbuild Construction Group Ltd for its generous sponsor and BrewHouse for its complimentary drinks .





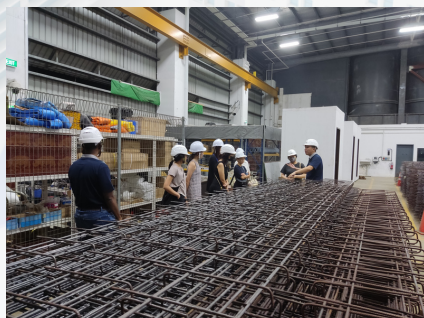


Kajima Asia Pacific Holdings invited our AWiCS President Er. Emily Tan and Honorary Secretary Ms Vimalatulasi on 21 October to give a talk on Women in Construction. More than 30 participants attended the talk. They shared on the current industry trends, overcome challenges faced and the opportunities available during this post pandemic.





AWiCS members visited Soilbuild Construction Group Ltd's Plant on 18 November 2022. We were welcomed with a nice dinner. We were impressed by their innovative capabilities and collaborative efforts to fabricate and customise prefabricated solutions to our needs.







On 9 December 2022, an MOU was signed between AWiCS and Prefabricated Access Supplies' and Manufacturers' Association (PASMA). The purpose of this MOU agreement is to outline a framework for reciprocity that will enable each organisation to benefit from common activities in relation specifically to the use of of Mobile Access Towers / Aluminum Scaffold Towers.

The collaboration of both organisations should enable each organisation to better achieve its objectives. As a consequence, the AWiCS and PASMA agree to have a programme of cooperation, which will include agreed actions and initiatives in terms of sharing and exchanging information to enhance their respective impact on issues and topics where both organisations have a common interest





The International Powered Access Federation (IPAF) promotes the safe and effective use of powered access equipment worldwide in the widest sense - through providing technical advice and information; through influencing and interpreting legislation and standards; and through safety initiatives and training programmes.

IPAF is a not-for-profit organisation owned by its members, which include manufacturers, rental companies, distributors, contractors and users. IPAF members operate a majority of the MEWP rental fleet worldwide and manufacture about 85% of platforms on the market.



WORLD OF SAFETY & HEALTH

World of Safety & Health Asia believes that a well-informed workplace is a safer workplace! Medical practitioners must stay current on the latest vaccines and medications made accessible by pharmaceutical companies to administer them to their patients.

Safety practitioners must also be aware of new and innovative solutions made available by manufacturers to provide the most up-to-date solutions in their workplaces!

This is the very reason for the existence of the World of Safety & Health Asia! World of Safety and Health Asia curates safety and health information into a single platform for the benefit of all stakeholders. World of Safety & Health Asia provides a FREE platform for all safety & health solutions providers to showcase their solutions, events & courses at NO COST.





Founded in 1974, the Prefabricated Access Suppliers' and Manufacturers' Association (Pasma), is the recognised focus and authority for mobile access towers. Pasma advances safety, standards and best practice across a wide range of sectors and represents the interests of its members in the UK, South Africa, South East Asia and the Middle East.

Whatever the need, the association has tower information, facts and expertise to impart at a level to suit everyone – from first time users to major contractors. Independent and self-financing, Pasma shapes and supports the future of the industry through the knowledgeable and enthusiastic involvement of its members, suppliers, specifiers and users.





**SoilBuild**  
CONSTRUCTION GROUP LTD

Soilbuild Construction Group Ltd. (the "Group" or "Soilbuild") is a leading builder with a long and successful track record of constructing a sterling award-winning portfolio of residential and business space properties. Since its inception in 1976, Soilbuild charts over 40 years of success in offering a full spectrum of real estate services which includes Civil Engineering, Design and Build, Construction, Turnkey Construction, Project Management Consultancy, Procurement and Mechanical & Electrical Installation, Precast and Prefabrication.



# Merry Christmas & A Happy New Year!

*to all AWiCS's Supporter*



AWiCS is the first association that is dedicated to the growth, development and retention of women in the Singapore's Built Environment Industry. Following its inception in June 2019 AWiCS has been taking the charge empowering women to be decision makers, inspiring them to continue improving and connecting spaces in Singapore and beyond.

AWiCS's dedication to unite all sectors of the built environment industry in creating positive impact and sustainable growth in society is evident from the strong corporate support and wide range of members within the industry. The association remains dedicated to mentoring, young adults to learn, grow and evolve to empower women professionals, inspire young adults and create valuable connections.

Regardless of your sector or gender. Join us on the journey of transformational growth. Step Up, Lean and Lead the Change!

## **CONTACT US**

**AWiCS Secretariat**

**18 Howard Road**

**#07-05 Novelty Bizcentre**

**Singapore 369585**

**Email : [info@awicsg.org](mailto:info@awicsg.org)**

**Follow us at:**

**<https://www.facebook.com/Association-of-Women-in-Construction-Singapore-115671767013744/>**

**<https://www.linkedin.com/in/awics-singapore/>**

**<https://youtu.be/rbScnmXJec0>**